

Wireless Registration Instructions

Gettysburg College requires all wireless computers and devices to be registered on the wireless network. All Users, including guests, will be directed to a registration page when you launch your Internet browser after connecting to GBCWiFi. The registration process will check to make sure you have an up to date **Antivirus application with up to date virus definitions**. If your wireless network adapter was previously registered, you will continue to operate normally and will not be required to register again.

Complete the form according to your selection. Note: students and employees should never use "Guest" for registration. If you have problems with registration, please contact the IT Helpdesk at 717-337-7000.

For example, a student or employee would login using their Gettysburg UserName and password. (Same as CNAV login credentials)

*** This Private Network is for Gettysburg College authorized users and Guests only ***

I ACCEPT the [Network Use Policy](#)

I am a Student or Employee

I am an Alumni

I am a Contractor requesting temporary Internet access

I am a Guest requesting temporary Internet access

Username

Password

Others would complete the form that appears with their selection

- I am a Student or Employee
- I am an Alumni
- I am a Contractor requesting temporary Internet access
- I am a Guest requesting temporary Internet access

First Name

Last Name

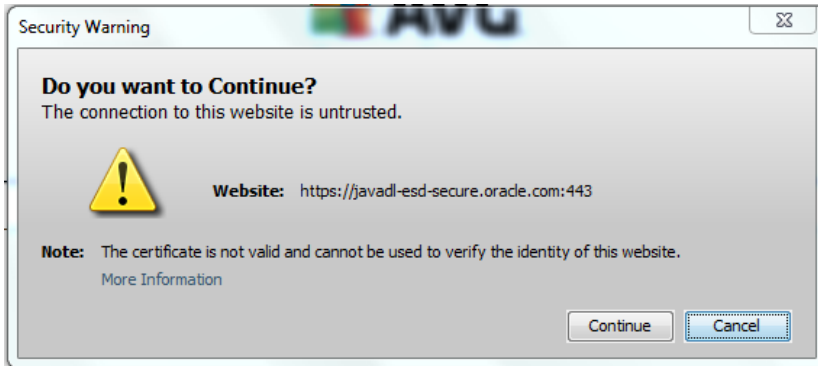
Email

Graduation Year

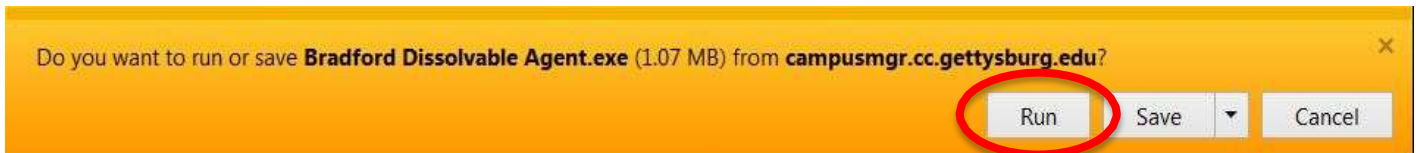
****Continue reading to view instructions to complete the registration process for your windows or mac computer on the Gettysburg network**

Windows Registration

You will be greeted with a certificate security warning box, please click on continue.



After logging in to your selected account option, you will be prompted to download the Bradford Dissolvable Agent onto your computer, which will make sure your antivirus software is up to date. Run the program. The prompts may appear differently depending on your browser version.



Your computer may warn you that the program could be unsafe. Ignore these warnings and follow the prompts to run the program.



Please note that some instances a "more info" hyperlink will also appear on the security warning bar. When this line appears, you will need to click on "more info" and then run anyway.



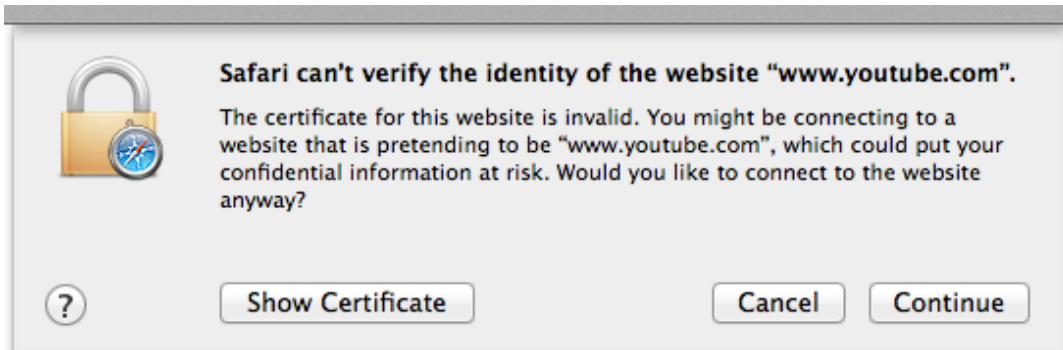
The Bradford Agent will take a minute to scan your antivirus software. If your antivirus is out of date or not installed, you will be taken to a page with links to download a current version. When your system meets the requirements, you will be taken to the success page and your computer will be configured to use the wireless network. Wait until it is finished.



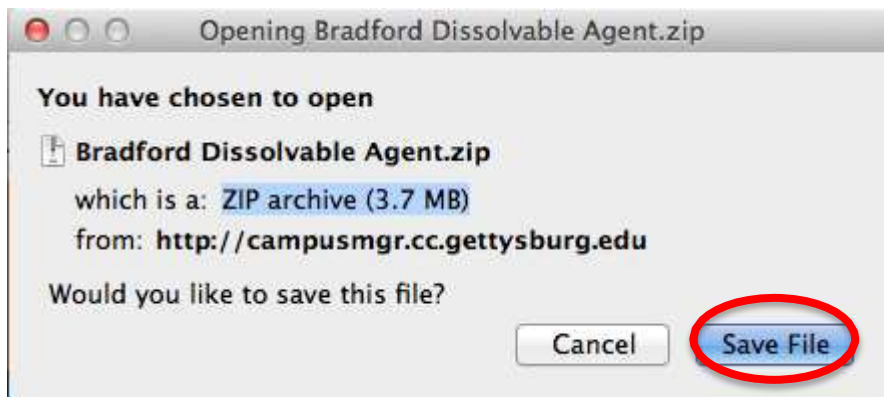
After the connection is established, close and reopen your browser. You should now be able to surf the internet on gbcwifi. If not, wait 30 seconds and restart your browser again. For further problems or questions, call or email the IT Helpdesk at 717-337-7000 or email ithelpdesk@gettysburg.edu or qtech@gettysburg.edu

Mac Registration

You will be greeted with a security certificate, please click on continue.



After logging in to your selected account option, you will be prompted to download the Bradford dissolvable Agent utility. Save the compressed .zip file onto your computer.



Open the file to extract the Bradford Dissolvable Agent application, and then run the application.



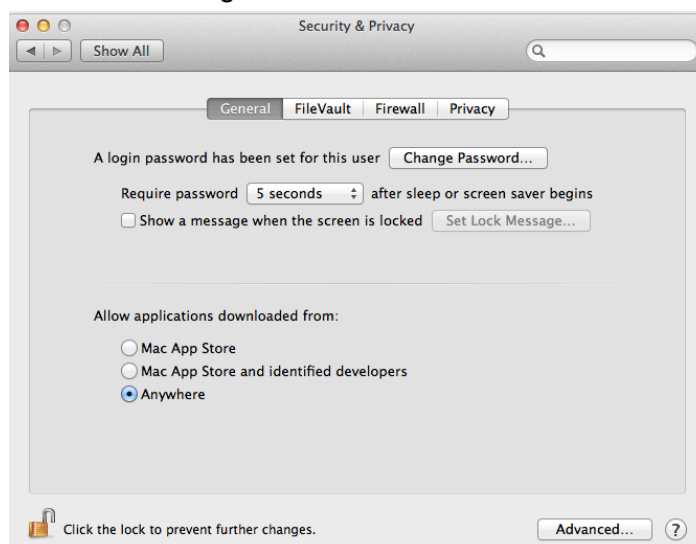


If you receive a security message when you try to run the Bradford Dissolvable Agent, please complete the following steps.

Click on the Apple Icon top right of your mac screen and choose System Preferences. Click on the Security and Privacy icon.



Click on the General tab and click on the radio button option "from anywhere". You will now be able to run the Bradford Dissolvable Agent. After you have completed the registration process, you can set the Security and Privacy option back to its default setting.



If your antivirus is

out of date or you do not have

one installed, you will be taken to a page with links to download a current version. Make sure that you update the virus definitions for the Anti-Virus program after installation.

When the Bradford Agent is finished, the success page will be displayed and your computer will be configured to use the wireless network. Wait until it is finished.



After the connection is established, close and reopen your browser. You should now be able to surf the internet on GBCWIFI. If not, wait 30 seconds and restart your browser again or restart your computer. For further problems or questions, call email the G-Tech Helpdesk at (717) 337-6935 or gtech@gettysburg.edu.